

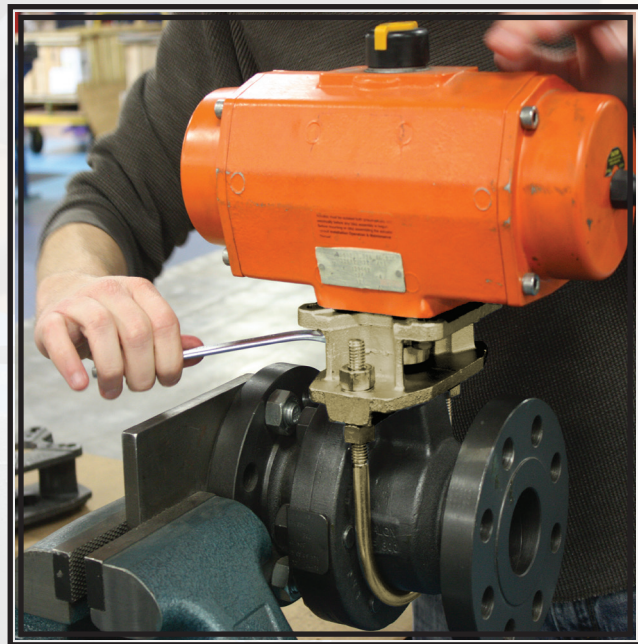
Actuation Mounting Package

Actuation torque values for Balon ball valves may be found on Balon Corporation's website at www.balon.com.

The breakaway torque values listed on our website do not contain any service or safety factors and are adequate for the operation of Balon ball valves equipped with standard seats and used to control clean liquid or gas at ambient temperature.

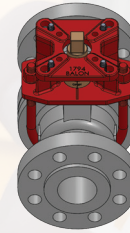
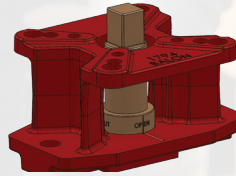
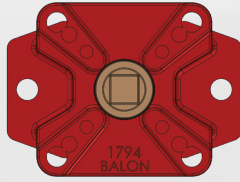
The run torque is approximately 50%, or one-half, of the breakaway torque. The re-seat torque is approximately 75%, or three-quarters, of the breakaway torque.

Corrosion, scale, build-up on the ball, or other service conditions can drastically alter torque requirements and should be given consideration when selecting actuation or automation equipment.



BALON ACTUATION MOUNTING PACKAGE

For Lever Operated Balon Floating Ball Valves



Balon's Actuation Mounting Package includes everything required to safely and precisely mount an actuator to a floating Balon ball valve.

BALON VALVE BORE SIZE	BOLT CIRCLES	MALE PARALLEL SQUARE DRIVER	BOLTS IMPERIAL	BOLTS METRIC	BALON'S PART #		
1" Full Port	F03 - 1.417" D.B.C. F04 - 1.653" D.B.C. F05 - 1.969" D.B.C. F07 - 2.759" D.B.C.	9mm	#10-24 X 5/8	M5 X 16mm	9-1F-ISO		
			1/4-20 X 5/8	M6 X 16mm			
		11mm	#10-24 X 5/8	M5 X 16mm	11-1F-ISO		
			1/4-20 X 5/8	M6 X 16mm			
		14mm	1/4-20 X 3/4	M6 X 22mm	14-1F-ISO		
			5/16-18 X 7/8	M8 X 22mm			
		17mm	1/4-20 X 3/4	M6 X 22mm	17-1F-ISO		
			5/16-18 X 7/8	M8 X 22mm			
2" Regular Port	F07 - 2.759" D.B.C. F10 - 4.015" D.B.C. F12 - 4.921" D.B.C.	17mm	5/16-18 X 7/8	M8 X 22mm	17-2R-ISO		
			3/8-16 X 1	M10 X 25mm			
		19mm	5/16-18 X 7/8	M8 X 22mm	19-2R-ISO		
			3/8-16 X 1	M10 X 25mm			
		22mm	5/16-18 X 7/8	M8 X 22mm	22-2R-ISO		
			3/8-16 X 1	M10 X 25mm			
		27mm	3/8-16 X 1	M10 X 25mm	27-2R-ISO		
			1/2-13 X 1	M12 X 30mm			
2" Full Port and 3" Regular Port	F07 - 2.759" D.B.C. F10 - 4.015" D.B.C. F12 - 4.921" D.B.C.	17mm	5/16-18 X 7/8	M8 X 22mm	17-2F/3R-ISO		
			3/8-16 X 1	M10 X 25mm			
		19mm	5/16-18 X 7/8	M8 X 22mm	19-2F/3R-ISO		
			3/8-16 X 1	M10 X 25mm			
		22mm	5/16-18 X 7/8	M8 X 22mm	22-2F/3R-ISO		
			3/8-16 X 1	M10 X 25mm			
		27mm	3/8-16 X 1	M10 X 25mm	27-2F/3R-ISO		
			1/2-13 X 1	M12 X 30mm			
3" Full Port and 4" Regular Port	F07 - 2.759" D.B.C. F10 - 4.015" D.B.C. F12 - 4.921" D.B.C. F14 - 5.512" D.B.C.	19mm	5/16-18 X 7/8	M8 X 22mm	19-3F/4R-ISO		
			3/8-16 X 1	M10 X 25mm			
		22mm	5/16-18 X 7/8	M8 X 22mm	22-3F/4R-ISO		
			3/8-16 X 1	M10 X 25mm			
		27mm	3/8-16 X 1	M10 X 25mm	27-3F/4R-ISO		
			1/2-13 X 1	M12 X 30mm			
		36mm	1/2-13 X 1	M12 X 30mm	36-3F/4R-ISO		
			5/8-11 X 1 1/4	M16 X 35mm			
4" Full Port and 6" Regular Port	F07 - 2.759" D.B.C. F10 - 4.015" D.B.C. F12 - 4.921" D.B.C. F14 - 5.512" D.B.C.		19mm	5/16-18 X 7/8		M8 X 22mm	19-4F/6R-ISO
				3/8-16 X 1		M10 X 25mm	
		22mm	5/16-18 X 7/8	M8 X 22mm	22-4F/6R-ISO		
			3/8-16 X 1	M10 X 25mm			
		27mm	3/8-16 X 1	M10 X 25mm	27-4F/6R-ISO		
			1/2-13 X 1	M12 X 30mm			
		36mm	1/2-13 X 1	M12 X 30mm	36-4F/6R-ISO		
			5/8-11 X 1 1/4	M16 X 35mm			

Conforms to ISO 5211

Balon can accommodate most actuators with ISO or Non-ISO mounting dimensions. Please contact the factory for additional information.